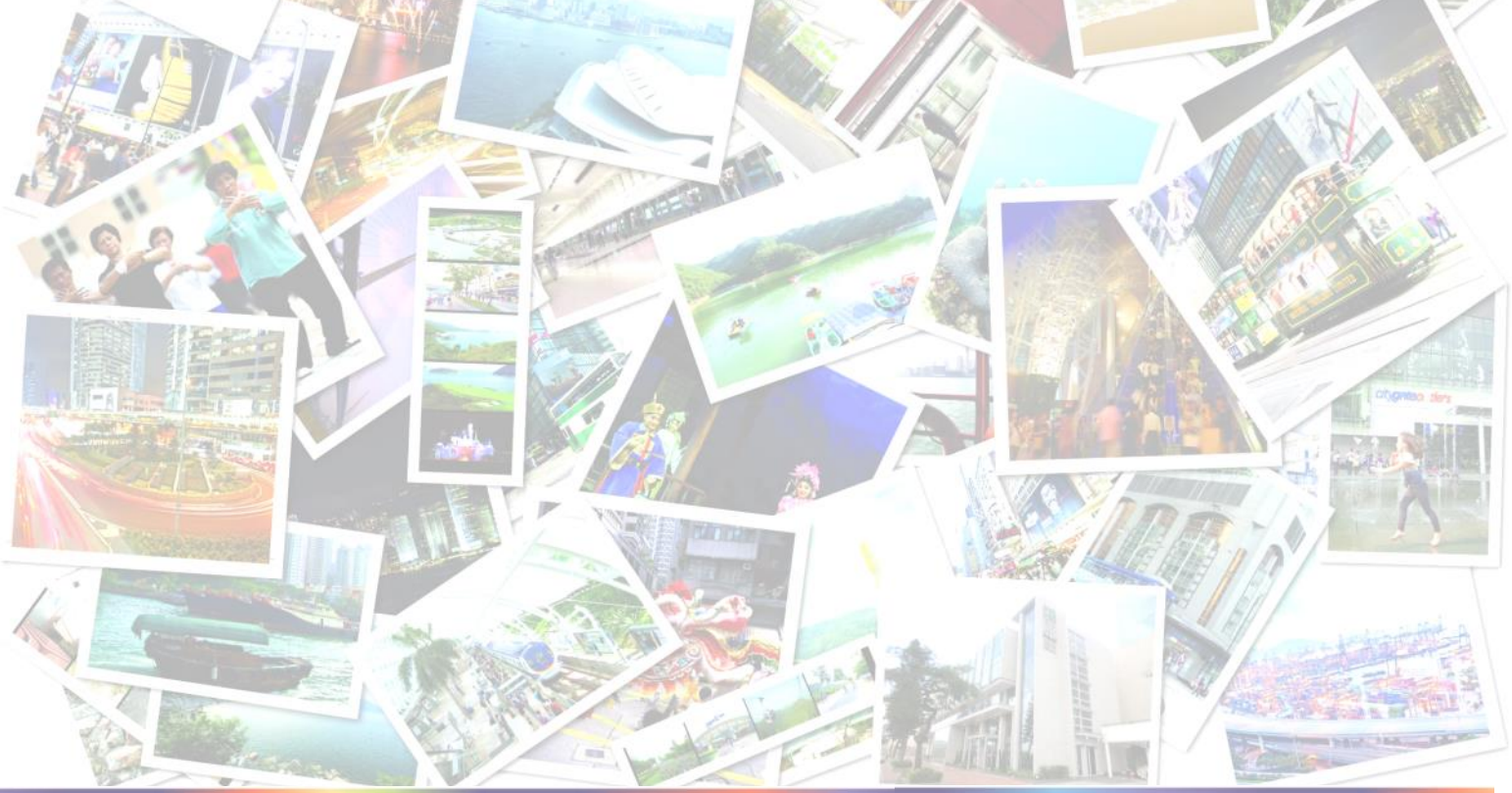




展城館 CITY GALLERY

Advance Group Worksheet



1. How much do you know about Hong Kong and other world cities?

a. Please compare the **land area** of the cities below, and write down number 1 to 5 in the blanks (1 represents the largest, 5 represents the smallest):

Hong Kong

London

Singapore

Sao Paulo

Paris



b. Please compare the **height of the buildings** below, and write down number 1 to 5 in the blanks (1 represents the highest, 5 represents the lowest):

Hong Kong
International
Commerce Center

Shanghai
World Financial
Center

New York
Empire State
Building

Paris
Tour
Montparnasse

Tokyo
Mid-Town
Tower

c. Please compare the **population density** of the cities below, and write down number 1 to 5 in the blanks (1 represents the highest, 5 represents the lowest):

Hong Kong

Mexico City

Beijing

Cairo

Mumbai



Please watch the "Main Show" carefully, and answer the following questions:

2. Regional Co-ordination with the Mainland is also one of our planning directions. Please write down the correct answers on the underlines:

In order to strengthen the status of Hong Kong as "Asia's World City", a number of infrastructure projects related to mainland links are underway, including _____, Guangzhou-Shenzhen-Hong Kong Express Rail Link, Liangtang/Heung Yuen Wai Control Point and Lok Ma Chau Loop development. Hong Kong would have better coordination and integration with _____ region.

3. Looking forward to the future, which of the following planning and infrastructure projects or proposals have been or will be carried out in the future by the government?

- | | |
|-----------------------------------|--|
| i. New Towns Development | v. Hong Kong-Zhuhai-Macau Bridge Project |
| ii. Harbour Area Treatment Scheme | vi. Revitalisation of old urban areas |
| iii. Energizing Kowloon East | vii. West Kowloon Cultural District |
| iv. Land Reclamation Projects | viii. Increase cross-boundary infrastructure |

A. (i) & (iii)

B. (ii), (iv) & (vi)

C. (ii), (iii), (v), (vi), (vii) & (viii)

D. (iii), (iv), (v), (vi), (vii) & (viii)

Planning Process

4. Which of the following are related to planning work?

- i. To enhance living and working environment.
- ii. To guide and control development and the use of land.
- iii. To carry out lease enforcement.
- iv. To promote the health, safety, convenience and general welfare of the community.
- v. To work in collaboration in different stages of the planning process with government departments, its Mainland counterparts, boards and committees.
- vi. To carry out the planning policies of Development Bureau.
- vii. To formulate, monitor and review the planning policies, and deal with issues of land-use at the territorial level.

A. (i), (iii) & (v)

B. (ii), (iv) & (vi)

C. (iii), (iv), (v) & (vii)

D. (i), (ii), (iv), (v), (vi) & (vii)



How much do you know about the transportation and communications of Hong Kong?

8. How long is the road network of Hong Kong?

- A. More than 1,000km B. More than 2,000km
C. More than 2,500km D. More than 4,000km

9. How many equivalent units (TEUs) of containers do Kwai Tsing Container Terminals handle each year?

- A. Over 5 million B. Over 10 million
C. Over 13 million D. Over 15 million

10. The four economic pillars of Hong Kong are:

- i. Financial services
- ii. Trading and logistics
- iii. Manufacturing industry
- iv. Tourism
- v. Producer and professional services
- vi. Agriculture and fishery

- A. (i), (iii), (iv) & (v) B. (i), (ii), (iv) & (v)
C. (i), (ii), (v) & (vi) D. (i), (iv), (v) & (vi)



Transportation and Communications

11. In order to strengthen the links with the Mainland, the Government has implemented the Hong Kong-Zhuhai-Macau Bridge projects. Please give a brief account of the uniqueness and advantages of the projects by filling in the blanks:

Hong Kong-Zhuhai-Macau Bridge (HZMB) will be the longest _____
_____ with _____ carriageway in the world. A new _____
_____ of reclamation has been adopted for use the first time in
HZMB projects which helps conserve the marine ecology. Upon completion of the
HZMB, this will provide long-term impetus to Hong Kong, in the sectors of
_____, finance, _____, commerce and _____.



How much do you know about "Green Hong Kong"?

12. Please write down the correct answers on the underlines:

A Greening Master Plan (GMP) defines the overall _____ of a district and serves as a guide for all parties involved in _____, _____ and _____ of greening works by considering the local characteristics and public aspirations. Apart from identifying suitable locations for planting, the GMP _____ and _____.

13. What Government initiatives have been adopted to improve the solid waste management in Hong Kong?

- i. To provide the environmental and recycling industry with long-term land through setting up EcoPark.
- ii. To adopt advanced waste facilities, including three strategic landfills and a network of refuse transfer stations.
- iii. To establish a diversified supply system and production of clean energy.
- iv. To encourage tenants and occupants to practice waste separation and recycling in the workplace by launching the "Programme on Source Separation of Commercial and Industrial Waste"

A. (i), (ii) & (iii)

B. (i), (ii) & (iv)

C. (i), (iii) & (iv)

D. (ii), (iii) & (iv)

1/F Living Environment

Urban design is an art of designing places for people and also one of the important elements in urban planning.

14. Please match the urban design principles with the appropriate standards and guidelines:

(A) Ridgelines

(B) Massing/Density

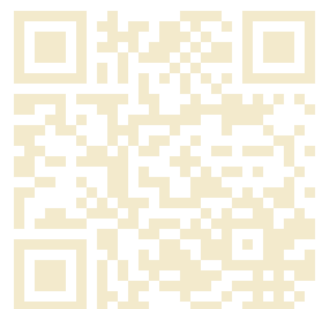
(C) Greening

(D) Open Space/Parks

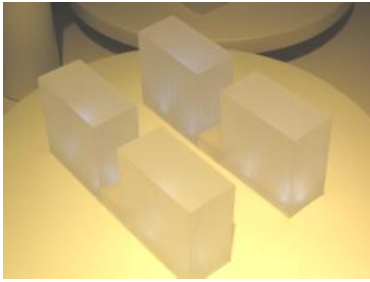
(E) Historical Monuments

(F) District Characters

- ___ Buildings with historical, architectural and cultural value should be preserved in order to pass on Hong Kong's culture and history.
- ___ Unique characteristics must be retained and preserved.
- ___ Visual linkage should be enhanced to help direct pedestrians to the related facilities.
- ___ Diversity in height and massing should be promoted to enhance the visual interest of locations.
- ___ Increasing vegetation helps to lower temperatures and enhance visual amenity.
- ___ View corridors should be provided to allow views to the harbour or mountain backdrop.



15. Please indicate characteristics of the building blocks design, layout and how the air ventilation would be improved:



A. _____



B. _____

16. When the Government is implementing the Heritage Conservation Policy, which of the following factors has to be considered?

- | | |
|--|--|
| i. Respect for private property rights | vi. Active engagement of stakeholders and the general public |
| ii. Development needs in the public interest | vii. Budgetary considerations |
| iii. Cross-sector collaboration | |

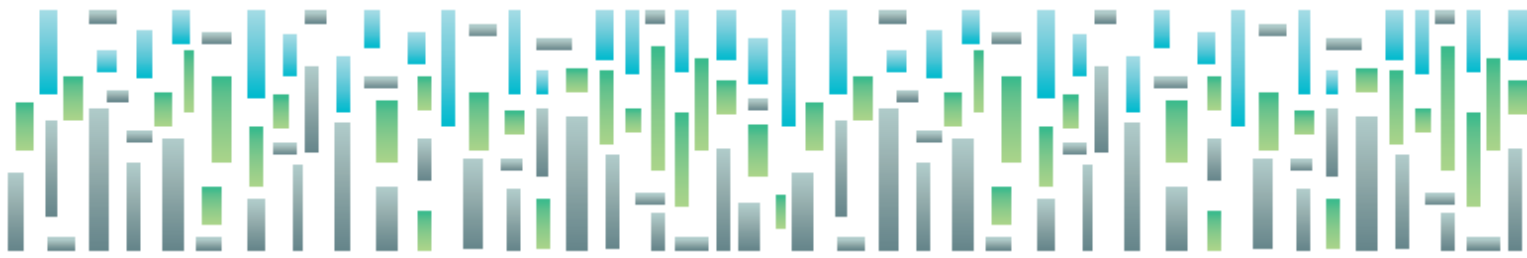
- | | |
|----------------------------|----------------------|
| A. (i) & (iii) | B. (ii), (iii) & (v) |
| C. (ii), (iii), (iv) & (v) | D. All of the above |

17. "Market Building" is one of the buildings with historical value in Hong Kong. Please watch the discussion on conservation values by experts and guests at the Heritage Debate Chamber, and match the following values with the relevant factors of consideration:


- | | | |
|-------------------------------------|-------------------------|-----------------|
| (A) Historical value | (B) Architectural Merit | (C) Group value |
| (D) Social value and Local Interest | (E) Authenticity | |


- ___ Market is a stimulator of different kinds of associated activities on the streets and nearby lanes.
- ___ To consider the use and the actual function of market but not just the building fabric.
- ___ Markets are gathering places of people on a regular basis and so become places of attachment and identity at the neighborhood level.
- ___ To consider stalls as architecture.
- ___ Market in the early years was an open-air market with different stalls and sometimes covered by canopies.





 3 Edinburgh Place, Central, Hong Kong

 (852) 3102 1242

 (852) 3104 0129

 enquiry@citygallery.gov.hk

 www.citygallery.gov.hk

Congratulations for completing the challenge! You will be rewarded with a souvenir as a token of appreciation! Hope you will introduce our gallery to your family members and friends!

We look forward to seeing you again! Thank you!!

Class: _____ Name: _____

School: _____ Date of visit: _____

